

WOB 20-22
RPM 90
SPP 1350
SPM 38

NB#7 REED
SL12TKPR
IN :2271 m
OUT:2285 m

14/11/05
15/11/05

WOB 8 - 10
RPM 75 - 90
SPP 1350
SPM 36

NB#8 REED

16/11/05

WOB 12-14
RPM 85
SPP 1325
SPM 37

decr RPM

ROP (min/m)
Gas (units)

WOB 16-18
RPM 80-90
SPP 1300
SPM 38

17/11/05

NB#9 HTC
MX-1814
20, 20, 16
IN : 2323 m

WOB 18-20
RPM 88
SPP 1450
SPM 41

POOH 2341

SANDSTONE: lt-med grn gy, tr lt brn & v calc, vf, subang-subrnd, mod srt, strg sil & wk calc cmts, abnt wh arg mtx-mtx sptd, abnt alt fels grs, com gy grn liths, tr brick red mnrl, tr blk coal detrit, hd, no vis por, no oil fluor

COAL: blk-dk brn gy, earthy where arg i/p, subvit where clean, plty - subconch fract, hd, brit, no fluor but wk dull pale yel crush cut

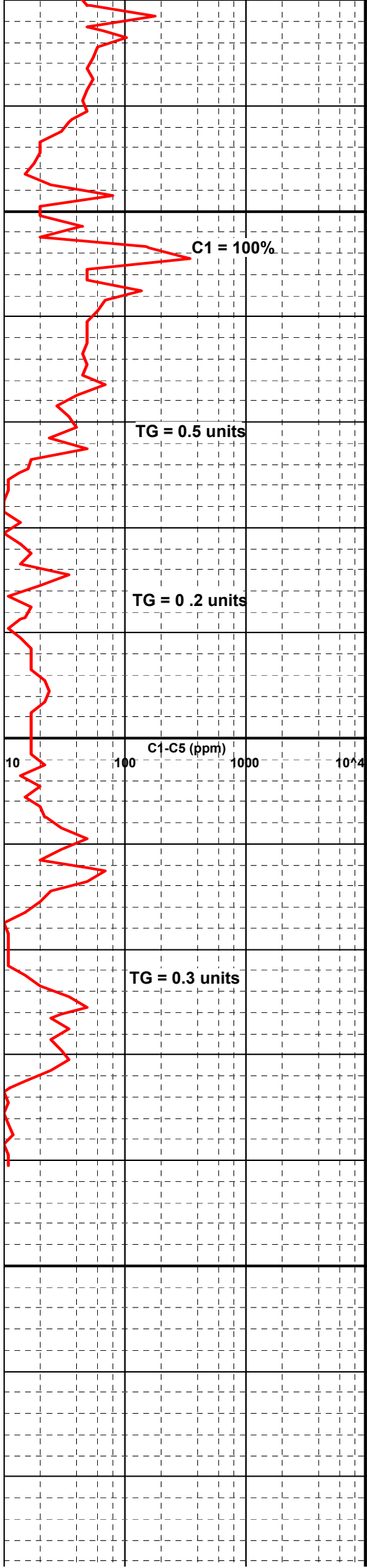
SANDSTONE: lt-med grn gy-pl grn gy, vf-f, gen a/a w/incr carb mtl & lam, v w cmt, rr pyr cmt, hd, no vis por, no oil fluor

SANDSTONE: lt-med grn gy, slty- vf, subang-subrnd, mod srt, v strg sil & mod calc cmts, rr pyr cmt, abnt wh arg mtx-mtx sptd, abnt alt fels grs, com gy grn liths, rr orng brn & blk liths, tr blk coal detrit, tr qtz gr, tr calcite lined fract, v hd, no vis por, no oil fluor

CLAYSTONE: off wh-med dk gy-med brn gy-occ dk gy & lt-med brn, com v slty grd to sltst i/p, vf aren w/alt fels grs grd to Sst i/p, sli calc where aren, mod carb i/p, com blk coal flecs & detrit, com micmic, tr calc xln lined fract, hd, subfiss

SANDSTONE: lt-med grn gy, slty- vf, subang-subrnd, mod srt, v strg sil & mod calc cmts, rr pyr cmt, abnt wh arg mtx-mtx sptd, abnt alt fels grs, com gy grn liths, rr orng brn & blk liths, tr blk coal detrit, tr qtz gr, tr calcite lined fract, v hd, no vis por, no oil fluor

CLAYSTONE: off wh-med dk gy-med brn gy-occ dk gy & lt-med brn, com v slty grd to sltst i/p, vf aren w/alt fels grs grd to Sst i/p, sli calc where aren, mod carb i/p, com blk coal flecs & detrit, com micmic, tr calc xln lined fract, hd, subfiss



C1 = 100%

TG = 0.5 units

TG = 0.2 units

TG = 0.3 units